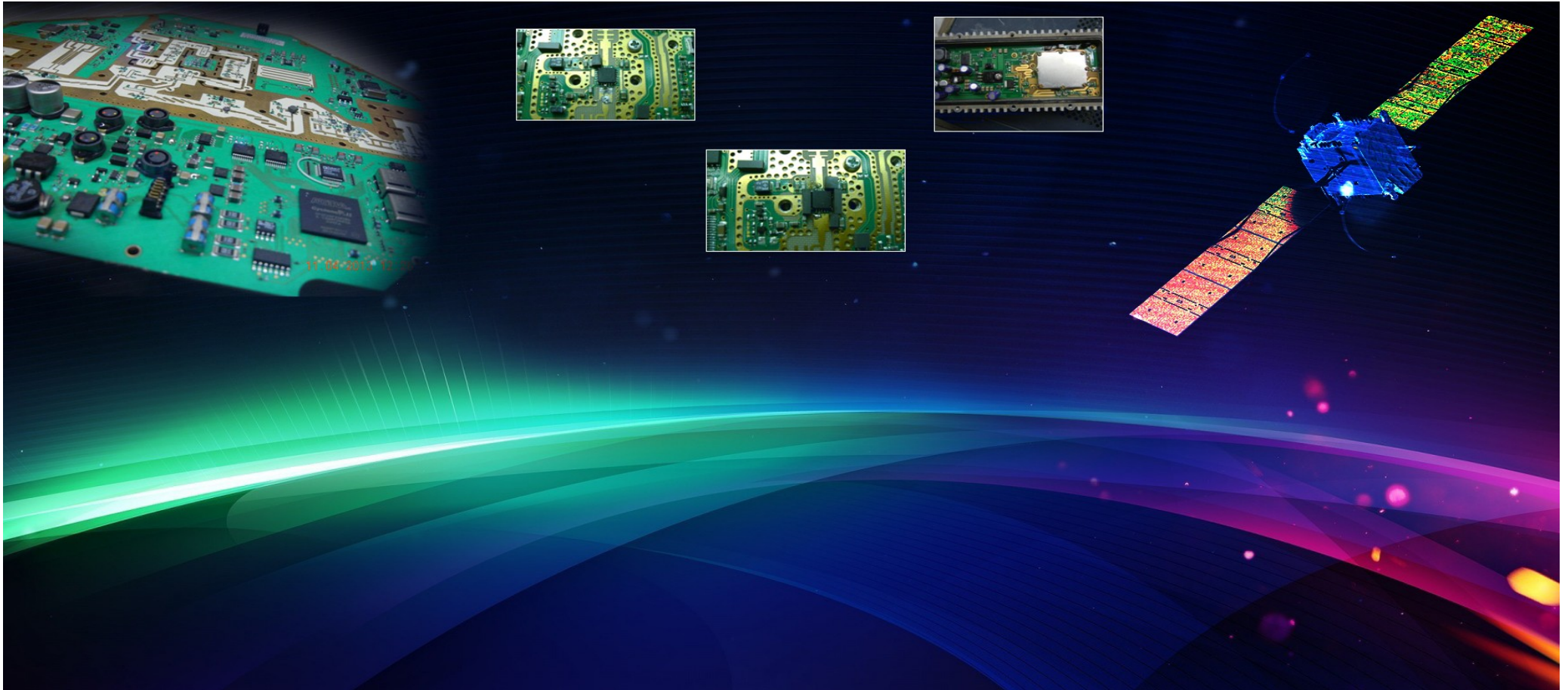



RF Specialities
Leading the RF wave



Page Index

Linear Power Amplifier	Page 3
Multi Carrier Power Amplifier(MCPA)	Page 3
IF to Higher Band Up Converters	Page 4
L Band to Higher Band Up Converters	Page 4
Block Up Converter (BUC)	Page 4
Low Noise Amplifier	Page 5
Down Converters	Page 5
Synthesizers/Local Oscillators	Page 6

Linear Power Amplifier

Freq (MHz)	Power(Watts)	Gain(db)	IMD3(dbc)	Voltage(V)	Current(A)	Operating Temp
860-960	150	60	-30	+24	15	-40C to +75C
1450-1550	10	50	-30	+24	5	-40C to +75C
1700-2400	150	60	-30	+24	15	-40C to +75C
2600-2700	20	50	-30	+12	15	-40C to +75C
2900-3500	5	50	-30	+12	10	-40C to +75C
5850-6450	150	60	-30	+12	40	-40C to +75C
6700-7100	150	60	-30	+12	40	-40C to +75C
7100-7900	100	55	-30	+12	35	-40C to +75C
7700-8500	100	55	-30	+12	35	-40C to +75C
8000-1000	20	50	-30	+12	15	-40C to +75C
13750-14500	100	60	-30	+12	40	-40C to +75C
14350-15500	10	50	-30	+12	8	-40C to +75C
17700-19700	10	50	-30	+12	8	-40C to +75C
21000-24000	1	40	-30	+12	5	-40C to +75C
29500-30000	0.25	40	-30	+12	5	-40C to +75C

* For other power outputs contact Factory

Multi Carrier Power Amplifier(MCPA)

Freq (MHz)	Power(Watts)	Gain(db)	ACPR(dbc)	Voltage(V)	Current(A)	No Of Carriers	Operating Temp
860-960	150	55	-65	+24	15	2/4/6/8	-40C to +75C
1710-1785	150	55	-65	+24	15	2/4/6/8	-40C to +75C
1805-1880	150	55	-65	+24	15	2/4/6/8	-40C to +75C
1920-1960	150	55	-65	+24	15	2/4/6/8	-40C to +75C
2110-2170	150	55	-65	+24	15	2/4/6/8	-40C to +75C
2200-2300	150	55	-65	+24	15	2/4/6/8	-40C to +75C

* For other power outputs contact Factory

* For details contact factory

ADDRESS: SCO-38, Sector 10A, Commercial Market, Gurgaon - 122001, India

Tel.: +91 124 4040528 , Cell: +91 9820139146

sales@rfspecialities.com

IF to Higher Band Up Converters

Input Freq (MHz)	Output Freq Range (MHz)	Gain (db)	P1 db (dbm)	Spurious (dbc)	Step Size (KHz)	Phase Noise @10KHz offset	Voltage (V)	Current (A)
70	950-1700	40	+15	-70	100	<-85dbc	15DC/220AC	5.5/3
70	5850-6450	40	+15	-70	100	<-85dbc	15DC/220AC	5.5/3
70	6700-7100	40	+15	-70	100	<-85dbc	15DC/220AC	5.5/3
70	9000-10000	40	+15	-70	100	<-85dbc	15DC/220AC	5.5/3
70	13750-14500	40	+10	-70	100	<-85dbc	15DC/220AC	5.5/4

L Band to Higher Band Up Converters

Input Freq Range (MHz)	Output Freq Range (MHz)	Gain (db)	P1 db (dbm)	Spurious (dbc)	Step Size (KHz)	Phase Noise @10KHz offset	Voltage(V)	Current(A)
950-1700	5850-6450	40	+15	-70	100	<-85dbc	15DC/220AC	5.5/3
950-1700	6700-7100	40	+15	-70	100	<-85dbc	15DC/220AC	5.5/3
950-1700	9000-10000	40	+15	-70	100	<-85dbc	15DC/220AC	5.5/3
950-1700	13750-14500	40	+10	-70	100	<-85dbc	15DC/220AC	5.5/4

* For details contact factory

Block Up Converter (BUC)

Input Freq Range(MHz)	Output Freq Range (MHz)	Gain(db)	Power Out (Watts)	Spurious (dbc)	Phase Noise @10KHz offset	Voltage(V)	Current(A)	Operating Temp
950-1700	5850-6450	55	1/2/4	-70	<-85dbc	+24	4	-40C to +75C
950-1700	6700-7100	55	1/2/4	-70	<-85dbc	+24	4	-40C to +75C
950-1700	9000-10000	55	1/2/4	-70	<-85dbc	+24	4	-40C to +75C
950-1700	13750-14500	55	1/2/4	-70	<-85dbc	+24	4	-40C to +75C

* For details contact factory

ADDRESS: SCO-38, Sector 10A, Commercial Market, Gurgaon - 122001, India

Tel.: +91 124 4040528 , Cell: +91 9820139146

sales@rfspecialities.com

Low Noise Amplifier

Freq (MHz)	Gain (db)	Noise Figure (db)	Spurious (dbc)	Voltage (V)	Current (A)	Operating Temp
800-1000	40	0.5	-70	+12	1.2	-40C to +75C
1400-1600	40	0.5	-70	+12	1.2	-40C to +75C
1800-2200	40	0.5	-70	+12	1.2	-40C to +75C
2300-2600	40	0.5	-70	+12	1.2	-40C to +75C
2900-3500	40	0.5	-70	+12	1.2	-40C to +75C
4000-5000	40	0.5	-70	+12	1.2	-40C to +75C
5000-6000	40	0.5	-70	+12	1.2	-40C to +75C
6000-7000	40	0.5	-70	+12	1.2	-40C to +75C
9000-10000	40	0.5	-70	+12	2	-40C to +75C
10950-11700	40	1	-70	+12	2	-40C to +75C
14350-15500	40	1	-70	+12	2	-40C to +75C
17700-19700	40	1	-70	+12	2	-40C to +75C

Down Converters

Input Freq (MHz)	Output Freq Range (MHz)	Gain (db)	Noise Figure (db)	Spurious (dbc)	Step Size (KHz)	Phase Noise @10KHz offset	Voltage (V)	Current (A)
950-1700	70	40	0.5	-70	100	<-85dbc	15DC/220AC	5.5/3
5850-6450	70	90	0.5	-70	100	<-85dbc	15DC/220AC	5.5/3
6700-7100	70	90	0.5	-70	100	<-85dbc	15DC/220AC	5.5/3
9000-10000	70	90	0.5	-70	100	<-85dbc	15DC/220AC	5.5/3
13750-14500	70	90	1	-70	100	<-85dbc	15DC/220AC	5.5/4

* For details contact factory

ADDRESS: SCO-38, Sector 10A, Commercial Market, Gurgaon - 122001, India

Tel.: +91 124 4040528 , Cell: +91 9820139146

sales@rfspecialities.com

Synthesizers/Local Oscillators

Frequency Range (MHz)	Power Out (dbm)	Spurious (dbc)	Step Size (KHz)	Phase Jitter (ps)	Voltage (V)	Current (A)	Operating Temp
100-1000	+10	-70	100	< 0.5	+5	1	-40C to +75C
1000-2000	+10	-70	100	< 0.5	+5	1	-40C to +75C
2000-3000	+10	-70	100	< 0.5	+5	1	-40C to +75C
3000-4000	+10	-70	100	< 0.5	+5	1	-40C to +75C
4000-5000	+10	-70	100	< 0.5	+5	1	-40C to +75C
5000-6000	+10	-70	100	< 1	+5	1	-40C to +75C
6000-7000	+10	-70	200	< 1	+5	1	-40C to +75C
7000-8000	+10	-70	200	< 1	+5	1	-40C to +75C
8000-9000	+10	-70	200	< 1	+5	1	-40C to +75C
9000-10000	+7	-70	200	< 1	+5	1	-40C to +75C
10000-11000	+7	-70	200	< 1	+5	1	-40C to +75C
11000-12000	+7	-70	200	< 1	+5	1	-40C to +75C
12000-13000	+7	-70	200	< 1	+5	1	-40C to +75C
13000-14000	+7	-70	200	< 1	+5	1	-40C to +75C
14000-15000	+7	-70	300	< 3	+5	1	-40C to +75C
15000-16000	+0	-70	300	< 3	+5	1	-40C to +75C
16000-17000	+0	-70	300	< 3	+5	1	-40C to +75C
17000-19000	+0	-70	300	< 3	+5	1	-40C to +75C

* Consult factory for your specific requirement

ADDRESS:

SCO-38, Sector 10A, Commercial Market, Gurgaon - 122001, India

Tel.: +91 124 4040528 , Cell: +91 9820139146

sales@rfspecialities.com